



THE SCARECROW

CABBAGE TREE CREEK NEWSLETTER

MARCH 2013

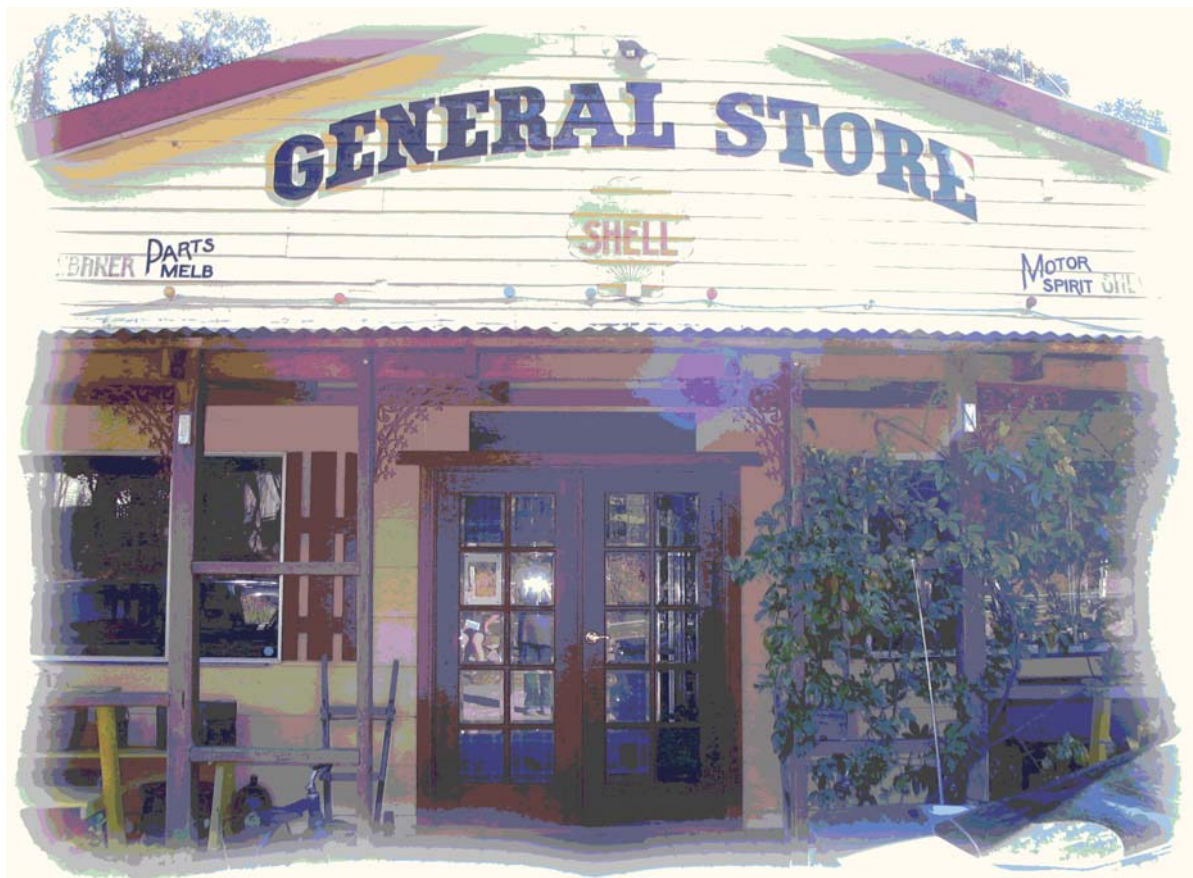
GIGANTIC GARAGE SALE

SUNDAY 24 MARCH 2013

Bushware Cafe

CABBAGE TREE CREEK

9:00am to 2:00pm



COME ONE - COME ALL

Bric-a-brac, furniture (there's even a spiral staircase and windows for sale!), household goods, produce, quilts, paintings, prints, plants etc.

Contact Jo on 5158 1224 if you want to reserve a selling space - BYO table 8am etc. to set up in the garden

SAUSAGE SIZZLE to raise funds for the Hall Restoration.

(f)route CART for the Community Garden

Snowy Growers Network, working with the Community Garden Network, have a group making **the CART**. – it's going to be a mobile cooking cart that can be towed by a bike. If you'd like to get involved, you're more than welcome. Call Margot on 0432 763 087 for more details. (see www.froute.com.au). Get in touch to be involved – email snowygrowers@gmail.com

(f)route began as an east gippsland project interested in producing public art related to fruit culture; It has grown into a (f)route movement attracting people who care about art and local produce, slow food, generosity, localism.

So, now they are creating a 'trail' built around (f)route breakfasts, (f)route CARTs and good people in good places. And most importantly - they are about to design a social enterprise - based on (f)route ideals - that can continually re-invest in east gippsland communities.



(Way out cart example (Caravan) -Artist's Creation - built by Kevin Cyr USA)

COMMUNITY BANK

Cabbage Tree folk may remember that Liz Mitchell and Jenni York addressed the Hall Committee on the Community Bank® project some time ago. The project has grown since that time and the Steering Committee is urging all those who can support the project with a pledge to get their pledges in as soon as possible. The sooner the targets are reached, the sooner the bank will open with all the community benefits that the bank will bring to the district.

Briefly, the Community Bank® will be owned by those people who pledge to buy the shares and must have broad-based community support – at least 300 shareholders. It will be run by a Board of local people, elected at the Annual General Meeting with each shareholder having one vote, no matter how many shares he/she holds, on matters arising at the meeting. Bendigo Bank provides the banking expertise and services under a franchise agreement with the local company. There will be a local manager, with the authority to make decisions, and 3-4 other staff, both full and part time.

The benefits to the community, apart from having a 'traditional' banking service, owned and run by locals, is that the profits from the business are distributed to the community in the form of grants which can be used to both fund local projects and events and to use as leverage to obtain further funds for bigger projects. Think what this could mean to the Cabbage Tree community.

Get behind the project and put a pledge in now. Your pledge will be redeemed when the prospectus is issued – some months away yet. So you don't need the money straight away. The pledges are needed now so that the Steering Committee has evidence that the project is viable. Come on, Cabbage Tree – help us make it happen.

Jenni York, Chair, Orbost and District Community Bank Steering Committee. 5154 2992.



Female Satin Bowerbird

Satin Bowerbirds are Back in Town

The satin bowerbird lives in rainforests and the edges of drier forests on the coast and adjacent ranges of eastern Australia. During autumn and winter, satin bowerbirds leave their forest habitat and move into open woodlands to forage for fruit, leaves and insects. However, with the arrival of the spring breeding season they collect together in small groups, inhabiting territories which they apparently occupy year after year. Each mature male bird protects and tends his own bower throughout the year.

Both male and female satin bowerbirds have bright lilac-blue eyes, but here the similarities end. The mature male satin bowerbird is about 30 centimetres long, and his plumage is black with a glossy purple-blue sheen. Until he moults into this plumage during his seventh year, his plumage resembles that of the female. The female is slightly smaller, and is coloured green, grey-green, dusky brown and dark brown. Her underbody is buff to cream, marked with dark olive-grey to dusky grey crescents.

The male's bower is an avenue of twigs and sticks, which he weaves into walls running in a north-south direction. He usually paints these walls with a mixture of charcoal and saliva. Platforms at both ends of the avenue are decorated with mainly blue-coloured objects - including flowers, feathers, and berries. When there are humans nearby, the birds will also use plastic items such as clothes pegs.

NEXT HALL COMMITTEE MEETING

10:30am - 21ST APRIL 2013

At the Cabbage Tree Creek Hall

ALL WELCOME



Snakes are now appearing in the Village, coming to look for water.

Be careful if crawling under the house, fossicking in timber stacks or moving rubbish.



Snake Hound Sam (Noel & Kathy's dog), killed one near the Moody's water tank last week. It has been noticed that the mice population has decreased of late. This may be a direct result of the increase of snake numbers.

PASSIONFRUIT SLICE

Jo may have some free passionfruit available at the shop

1 cup of SR Flour
1 cup of Coconut
125gm Melted Butter
1/2 Cup Sugar
Pinch of Salt
Mix dry ingredients with butter. Pour into greased lined slice tray and bake in mod. oven for 15 mins.



Topping:

1 tin condensed milk, juice 2 lemons, pulp of 2 passionfruit. Mix together and spread evenly over cooled base. Refrigerate until set.

Deadline for the next Newsletter is the end of April 2013.

E-mail or deliver any articles, recipes, photos, history, news or notices etc to Jack or Denise.

moody@harboursat.com.au